

L25

Marine Survey USV Platform



10 KN | 65H @ 4KN | 200 KG

Max. Speed

Endurance

Payload



MBES



Sub-bottom Profiler



Side Scan Sonar



Magnetometer

The L25 is equipped to perform hydrographic and geophysical surveys, offering comprehensive data collection for subsea mapping, pipeline inspection, and seabed characterization essential for offshore construction and maintenance.

Application Scenarios

Covering pipeline & cable surveys, site & route surveys, construction & installation surveys for offshore oil & gas platforms, offshore wind farms, and nearshore construction, as well as geophysical and hydrographic surveys, seabed exploration, and environmental monitoring for diverse sectors like sea mining, fisheries & marine ranching, and marine research

Key Features

- 1 Spacious deck, high payload capacity, simultaneous support for multiple instruments
- 2 Compact A-frame and winch enable towing surveys with a cable length of up to 200 meters
- 3 Foldable lifter protects instrument wet ends and enhances payload capability
- 4 Catamaran design minimizes swaying and spray foam, ensuring stability
- 5 Automatic return to designated location to avoid getting lost at sea

SPECIFICATIONS

Physical

Dimension	7.5m(L)*2.8m(W)
Weight	2.4t
Draught	0.4m
Hull Material	Marine Aluminum Alloy
Deck machinery	Auto Lifter, Towing System

Performance

Max Speed	10 kn
Survey Speed	4~5 kn
Endurance	65h @ 4kn
Operation Sea State	Sea State III
Payload	200kg

Power & Propulsion

Propulsion	Outboard Diesel Engine × 2
Power for Electronics	Battery Pack + Diesel Generator
Fuel Capacity	Diesel 150L × 2

Navigation Aids & Safety

Situation Awareness	Navigation Radar, AIS, Camera
Collision Avoidance	Dynamic / Static Collision Avoidance

Control & Communication

Control Mode	Remote Control / Autonomous
Communication	Private Network 10-20km, Remote Controller 1km Public Network, Optional: SATCOM
Software	OceanAlpha USV Navigation & Mission Software

INTEGRATIONS

MBES

Sub-bottom Profiler

Side Scan Sonar

Magnetometer

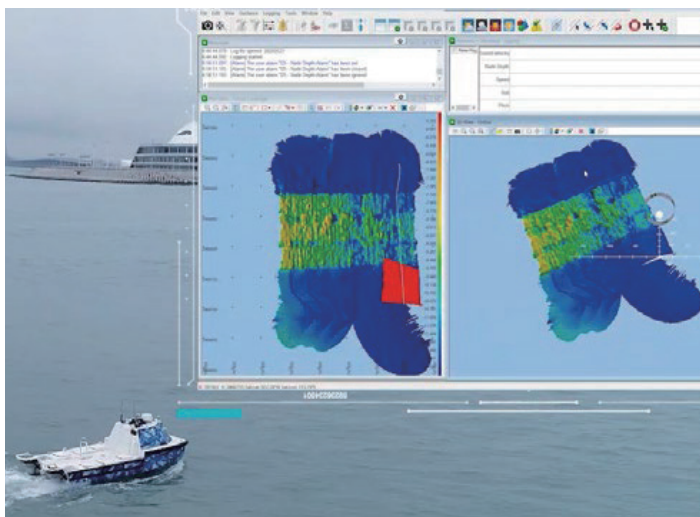
Water Quality Sonde

ADCP

USBL

Towing Support: Magnetometer / Side Scan Sonar

APPLICATION CASE



UNDERWATER TOPOGRAPHIC MAPPING FOR OFFSHORE ENGINEERING MAINTENANCE

EQUIPMENT USED:

L25 USV, RESON T50-P

APPLICATION:

Key bridge maintenance findings were revealed during a 2-hour IHO-compliant data collection from two survey areas: Site 1 (500m*200m) and Site 2 (100m from the island).