

V20 Uncrewed Surface Vessel

Offshore Survey, Inspection & Subsea Intervention Platform



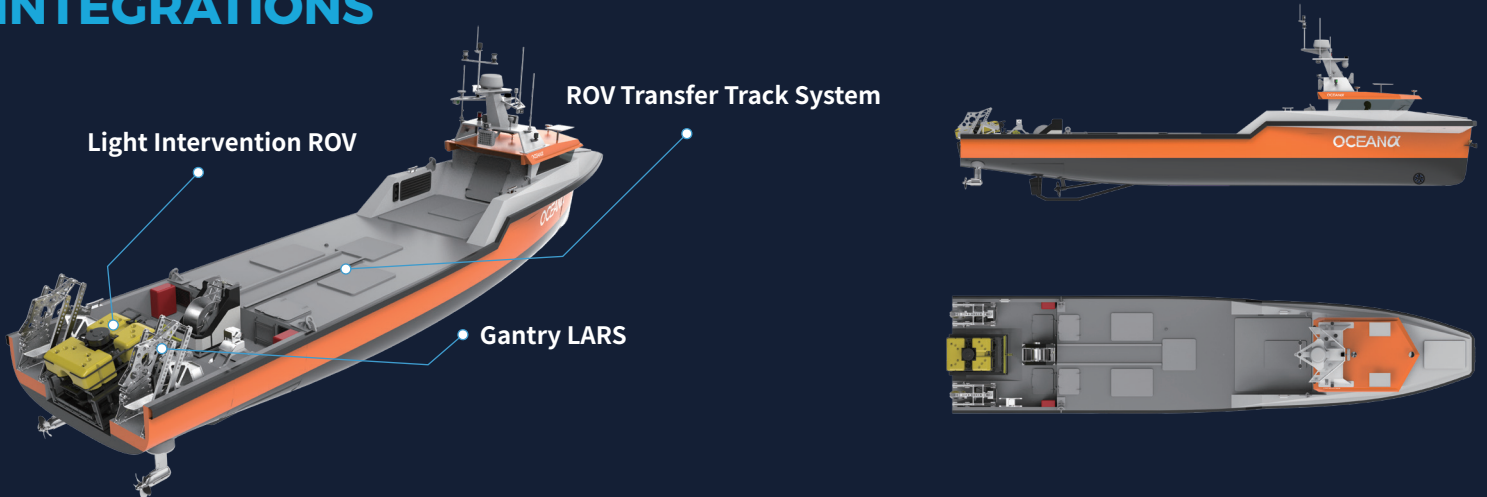
30 days
Endurance

1.5 T
Payload

DP1
Equivalent Dynamic Positioning

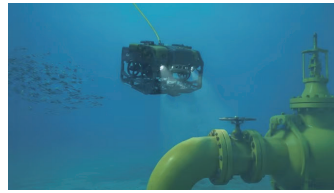
Up to SS4
Operation

INTEGRATIONS



APPLICATION SCENARIOS

- Offshore Oil and Gas Pipeline Survey
- Subsea Infrastructure IMR
- Seabed Mapping and Geological Survey
- Marine Scientific Research
- Offshore Engineering Construction



SPECIFICATIONS

PHYSICAL

Hull Type	Monohull
Material	Aluminum alloy
Length Overall (LOA)	14.8 m
Breadth Overall (BOA)	3.2 m
Moulded Depth	1.5 m
Total Height	2.8 m
Draught	0.8 m
Light Displacement	16 t
Payload Capacity	≥ 1,500 kg (Deck Machinery And Payloads)
Fuel Tank Capacity	5,000 L

PERFORMANCE

Service Speed	6 kn
Max Speed	10 kn
Endurance	30 days
Operation Sea State	SS4
Survival Sea State	SS5
Dynamic Positioning	DP1 (Equivalent Dynamic Positioning)

POWER & PROPULSION

Power Setup	Hybrid Diesel-Electric Propulsion System
Main Engine	184 kW
Bow Thruster	1 x 20 kW
Azimuth Thruster	2 x 40 kW

CONTROL & COMMUNICATION

Remote Control (2.4GHz)	1 km
Public Cellular	4G / 5G Coverage-dependent
Private Network (1.4GHz)	15 km
Satellite	Starlink (2 Sets)

CLASSIFICATION

DNV, BV, CCS and others (Optional)