

# V180 Marine Survey USV Platform



**30 days (Transit+DP)**  
Endurance

**35 T**  
Payload

**DP2**  
Dynamic Positioning

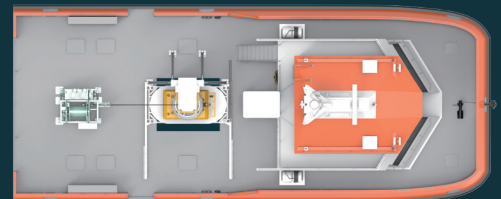
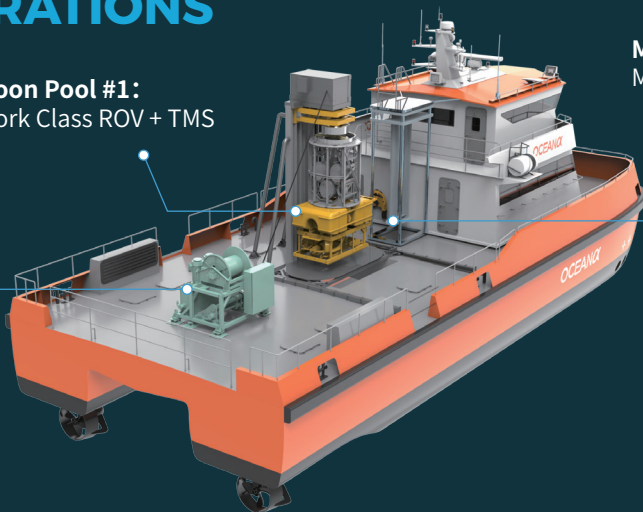
**Work-Class ROV**  
Operation

## INTEGRATIONS

**Moon Pool #1:**  
Work Class ROV + TMS

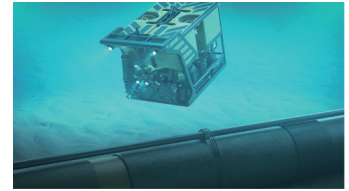
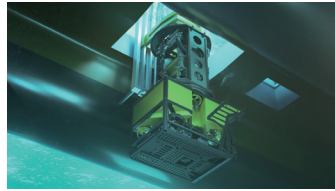
**Moon Pool #2:**  
MBES, USBL, etc

ROV Winch



# APPLICATION SCENARIOS

- Offshore Oil and Gas Pipeline Survey
- Subsea Infrastructure IMR
- Seabed Mapping and Geological Survey
- Marine Scientific Research
- Offshore Engineering Construction



## SPECIFICATIONS

### PHYSICAL

|                  |        |
|------------------|--------|
| LOA              | 23.8 m |
| Breadth          | 10.6 m |
| Displacement     | 182 t  |
| Moulded Depth    | 3.85 m |
| Draught          | 1.6 m  |
| Payload Capacity | 35 t   |

### PERFORMANCE

|                           |                      |
|---------------------------|----------------------|
| Max.Speed                 | 12 kn                |
| Endurance                 | 30 days (Transit+DP) |
| Operational Sea State     | Up to SS4            |
| Survival Sea State        | Up to SS5            |
| Dynamic Positioning       | DP2                  |
| ROV Operational Depth     | 3000 m               |
| ROV Operational Sea State | Up to SS4            |

### POWER & PROPULSION

|                       |  |
|-----------------------|--|
| Propulsion System     | Hybrid Diesel-Electric Propulsion System |
| Diesel Generator      | 2 x 400kW                                |
| Bow Thruster          | 2 Sets                                   |
| Main Azimuth Thruster | 2 Sets                                   |

### CONTROL & COMMUNICATION

|                 |                          |
|-----------------|--------------------------|
| Remote Control  | 1 km (2.4GHz)            |
| Public Cellular | 4G/5G Coverage-dependent |
| Broadband Radio | Up to 15 km (1.4GHz)     |
| Satellite       | Starlink (2 Sets)        |

### CLASSIFICATION

|                |                    |
|----------------|--------------------|
| CLASSIFICATION | CCS, BV (Optional) |
|----------------|--------------------|